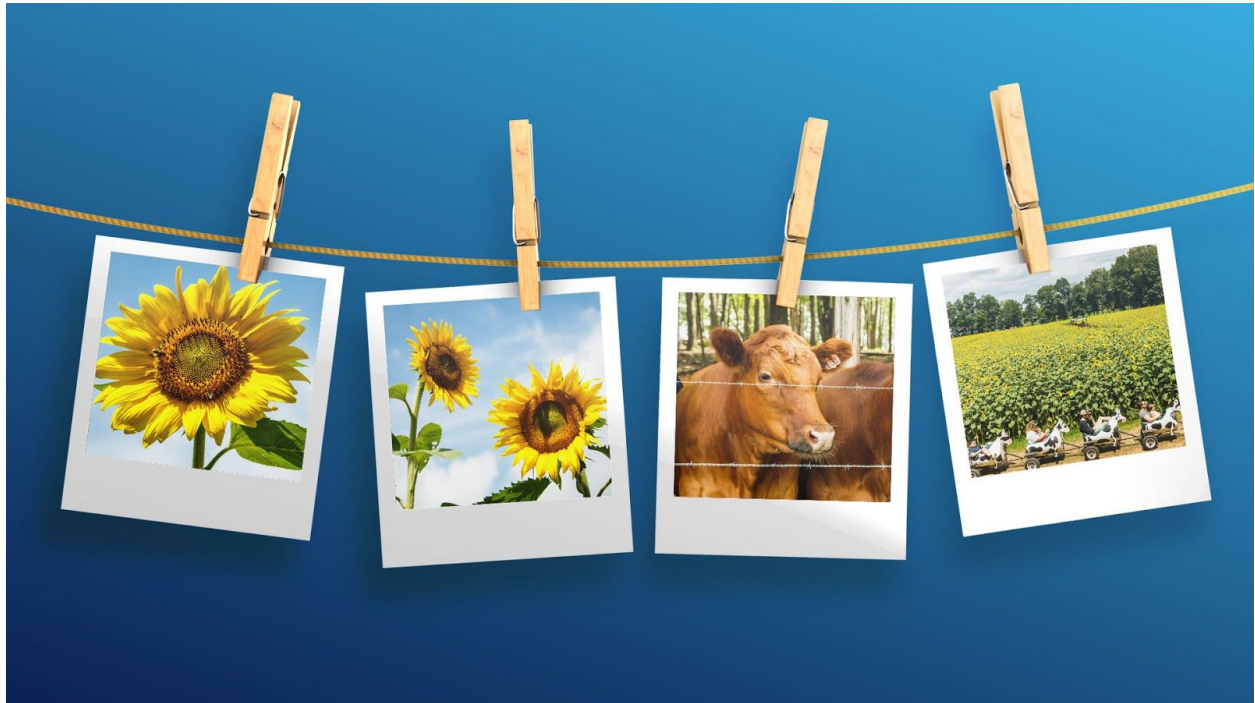


# Photoshop Elements: How to Use a PSD Mockup

Adobe® Photoshop® Elements 15



A mockup is a prearranged scene that you can use to show a product or an image in real world settings, for example:

- Your YouTube page displayed on an iPad
- Custom text on a coffee mug
- A string of Polaroid photos that showcase your images

Mockups are layered PSD files that have an interchangeable layer for your image. In this lesson, learn how to insert your own image into a PSD mockup.

## Simple Replacement: iPad Screen

Open the mockup PSD file and any images you want to use.

**Note:** To preserve the original mockup file, from the **File** menu, select **Duplicate**. Then, close the original file without changes. Work on the duplicate copy.

**In the PSD file:**

1. Select the layer that you need to replace.
2. Select the image in the replacement layer. Press **Ctrl** or **Cmd** and click the layer thumbnail for that layer.
3. Create a new layer above the replacement layer.
4. Open the image file.

**In the image file:**

5. Press **Ctrl+A** or **Cmd+A** to select the image.
6. Press **Ctrl+C** or **Cmd+C** to copy the image to the clipboard.
7. Go back to the PSD file.

**In the PSD file:**

8. Select the empty layer.
9. From the **Edit** menu, select **Paste into Selection**. Your image will be centered within the selection and parts of the image that do not fit will be hidden, but available to transform.
10. If not already selected, select the **Move** tool. In the Tool Options, check **Show Bounding Box**.
11. Click on one corner handle of the bounding box. The Tool Options change to the Transform Tool.
12. In the Tool Options, check **Constrain Proportions**.
13. Drag to corners of the image to fit into the selected area.
14. Press **Enter** or check the **green checkmark** to accept the changes.
15. In the replacement layer, press **Alt** or **Opt** and click and drag on the **Layer Mask** to copy it to the new layer.
16. In the replacement layer, press **Alt** or **Opt** and click and drag on the **Layer Styles icon (fx)** to copy it to the new layer.
17. From the **File** menu, select **Save As** and save your completed image.

## Text on a Curved Surface: Coffee Mug

The coffee mug has a curved surface and the text has special effects that we need to replicate.

To create the text:

1. In the PSD file, select the layer that you need to replace.
2. Select the **Horizontal Type** tool. In the Tool Options:
  - a. Select a font.
  - b. Change the font color to black.
  - c. Select **Anti-aliasing**.
3. Type the text you want to add and check the **green checkmark**. The Move tool is now selected.
4. Move or resize the text as needed.

To curve the text:

1. Select the text layer.
2. Select the **Horizontal Type** tool.
3. In the **Tool Options**, click **Create warped text**. The **Warp Text** dialog box opens.
  - a. Select **Arc** from the **Style** drop-down list.
  - b. Select **Horizontal**.
  - c. Move the **Bend** slider to **-5%** or as needed.

To modify the text effects:

1. Select the text layer. Reduce **Opacity** to **75%**.
2. From the **Filter** menu, select **Blur**, then **Gaussian Blur**. You must convert the text to a smart object or rasterize it before proceeding.
3. Select **Convert to Smart Object**.
4. In the **Blur** dialog box, set a blur of **2.5 px** or more, as needed, and click **OK**.

**Note:** If you want to place an image on the mug, you can use the **Liquify Filter** to curve the image. See this video:

Lesson 23: Decorate a Mug  
<https://youtu.be/9Fk5aK79gHg>

# Working with Groups and Multiple Images: Polaroid String

The process for working with multiple images is mostly the same as for replacing a single image.

Some tips to keep in mind:

- In some PSD files, all the replacement layers are organized in a **Layer Group**. When you create a new layer, it will appear at the top of the layer stack. Drag and drop it into the layer group above the image you want to replace.
- Create a new layer for each image you want to replace.
- Remember to copy any layer masks and layer styles from the replacement layer to your own image layers.

## Resources

### Mockups use in this lesson

8 Free Cup Mockups

<http://www.bestpsdfreebies.com/freebie/8-free-cup-mockups/>

Hanging Polaroid Photos Mockup

<https://psd.graphics/mockups/hanging-polaroid-photos-mockup-free-psd/>

Working on iPad Mockup

<https://psd.graphics/mockups/working-on-ipad-mockup-free-psd/>

### Mockup sites for free mockups

Mockup World (directory of free mockups on other sites)

<https://www.mockupworld.co/>

Best PSD Freebies

<http://www.bestpsdfreebies.com/>

PSD Graphics

<https://psd.graphics/>

### Font

Bonjour! Typeface by Nicky Laatz

<http://bit.ly/2wt093s>

# Copyrights and Usage

Copyright © 2017 Karen Brockney. All rights reserved.

Teaching a class?

You have my permission to use any of my articles or videos  
in your classrooms for educational purposes.

You may copy and distribute articles and videos in class, but not online.  
Commercial use is not permitted.

You do not need to contact me to ask permission.

## Social Media

Website:	<a href="http://snapimy.com/">http://snapimy.com/</a>
YouTube:	<a href="https://www.youtube.com/user/brockney">https://www.youtube.com/user/brockney</a>
Facebook:	<a href="https://www.facebook.com/snapimy/">https://www.facebook.com/snapimy/</a>
Twitter:	<a href="https://twitter.com/karenbrockney">https://twitter.com/karenbrockney</a>
Instagram:	<a href="https://www.instagram.com/kbrockney/">https://www.instagram.com/kbrockney/</a>